

The current alcohol and other drugs situation in El Salvador

The country borders the Pacific Ocean between Guatemala, Honduras and Nicaragua. With a population of approximately 6.0 million people, it is the most densely populated nation in Central America and is undergoing rapid industrialization.



1

STUDIES

- Knowledge, Attitudes and Practices of the Salvadoran Population (drugs related)
- Forensic Medicine Reports
- Drugs and violence in the metropolitan area
- Economic, social and Human Costs of Drugs
- Special populations :gangs, deportees, DUI's, crack/HIV, drug users population profile (FUNDASALVA)

2

LEGISLATURE

- Drug Control and Demand Reduction Law
- Anti drug Commission: National Plan 2002-2008

3

KAP El Salvador 2004: prevalence

- Age of onset for legal drugs: 12.9 years
- Similar onset for males and females
- Age of onset for crack use: 13 years
- **63% OF TOTAL POPULATION HAS TRIED DRUGS AT LEAST ONCE IN THEIR LIFETIME**

Nacional KAP SURVEY, FUNDASALVA, 2004

4

KNOWLEDGE AND ATTITUDES

- 92% of the population(12-45) knows and has access to legal drugs: alcohol and tobacco
- 70% of the population know and have access to marihuana and inhalants
- 50% of the population know and have access to crack/cocaine
- 28% of the population know ecstasy

5

FUNDASALVA'S CLIENTS

- 38% of patients have "severe" drug problems
- Crack use in 70% of the cases.
- 70% are unemployed.
- 100% of patients uses 2 or more drugs, 54% uses 6 or more.
- 89% of patients drug use onset at 13 years

• Patient's PROFILE 1995-2007 FUNDASALVA

6

GANGS AND DEPORTEES

- 90% OF GANG MEMBERS USE ILLICIT DRUGS



- IN YEAR 2007:
10% OF DEPORTEES ARE DEPORTED FOR DRUG RELATED CRIMES (more than 400 deported weekly)

7

Prevention and Treatment Alternatives

- NGO's prevention and treatment institutions

Anti-drug Foundation of El Salvador
"FUNDASALVA"

- State Psychiatric Hospital
- Some (few) private (expensive) treatment facilities

8

FUNDASALVA



9



- ✓ **FUNDASALVA** was constituted in 1989 with the support of 50 local companies.
- ✓ It is the only specialized organization that provides comprehensive assistance for alcohol and drug use disorders
- ✓ Dedicated to:
 - The **comprehensive prevention** of inadequate use of alcohol and other drugs, and harmful associated behaviors.
 - The **treatment, rehabilitation and social-labor reinsertion** of affected individuals and their families.

10

MISSION

To improve the quality of life and the well-being of the individual, the family and the society, through the promotion of the physical and mental health of the population vulnerable or affected by alcohol and other drug disorders

We support our work in the scientific understanding of addiction



11

TARGET POPULATION

IN PREVENTION

- ✓ Children, adolescent, and juvenile population in vulnerable situation and at social risk
- ✓ Families
- ✓ Working population
- ✓ Marginal urban communities
- ✓ Specific population

IN TREATMENT AND REHABILITATION

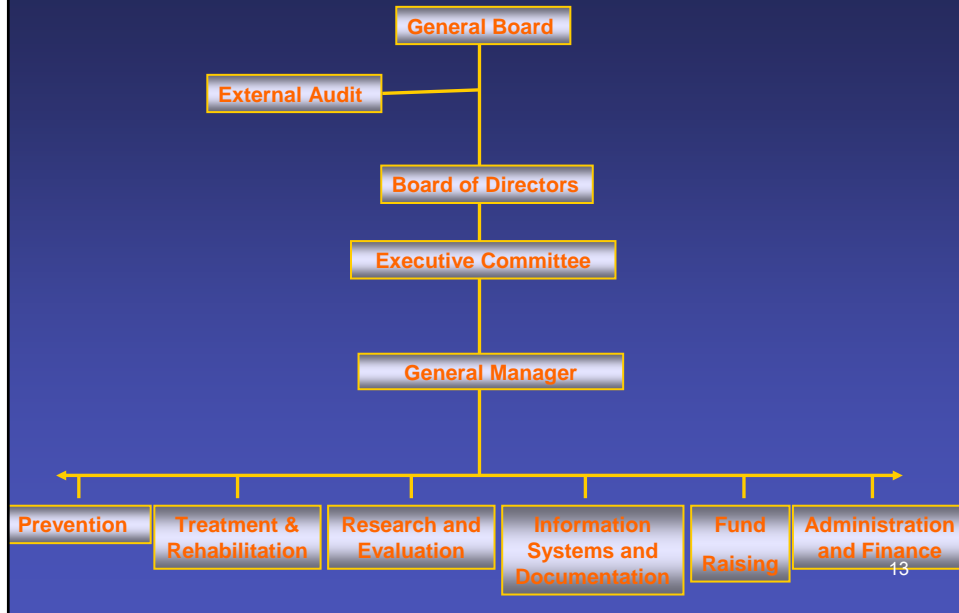
- ✓ Youngsters and families affected by alcohol and drug use disorder
- ✓ Special population

IN SOCIAL-LABOR REINSERTION

- ✓ Youngsters in vulnerable situation and at social risk
- ✓ Youngsters in the process of rehabilitation

12

Organization chart FUNDASALVA



COORDINATION

EXECUTIVE BRANCH OF GOVERNMENT

- ✓ Ministry of Government
- ✓ Ministry of Health
- ✓ Ministry of Education
- ✓ Ministry of Foreign Relations
- ✓ Ministry of Public Works
- ✓ Ministry of Defense
- ✓ Ministry of Labor

COVERAGE

629	Schools
299	Public High Schools
8	Universities
32	Health Units
10	Hospitals
22	Town Halls
98	Marginal urban communities
150	NGOs
35	Private Companies
4	Autonomous Institutions
5	Penitentiaries
10	Military Organizations
13	Media (radio, press, television)

15

PREVENTION PROGRAM

Its purpose is to promote a comprehensive development for human beings, preventing alcoholism, drug addiction and other harmful behaviors for the individual's health, family and society.



16

PREVENTION PROGRAM

Comprehensive Programs :

- School Prevention
- Municipal Prevention
- Community Prevention
- Family Integration
- Student Violence Prevention
- Solidarity Brigades Program
- Teachers Training
- Prevention at the Workplace



The programs are based on artistic, sports, vocational training and job creation alternatives.

17

Two key lessons:

First:



- **breakdown of values, families, and communities**
- **sheer suffering and unresolved trauma of war**
- **lack of positive alternatives for youth**

Have been relevant causes of the burgeoning abuse of drugs and alcohol in our country.

18

In facing these underlying causes of drug abuse we learned a second lesson:

THE BEST WAY TO PREVENT AND TREAT DRUG ABUSE IS BY HELPING PEOPLE REBUILD THEIR SENSE OF SELF AND OF COMMUNITY--SO THEY CAN HELP THEMSELVES AND DIRECT THEIR OWN LIVES AGAIN.



19

RELEVANT OUTCOMES IN PREVENTION

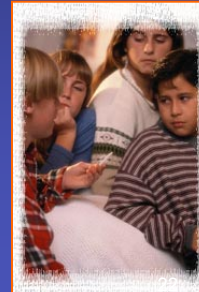
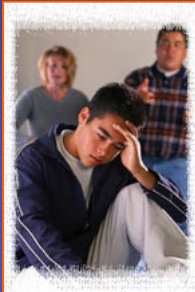
- Our programs have left schools and have taken into account children and youth from rural areas and communities, expanding our national coverage.
- We have trained community leaders, teachers and technicians from NGOs in prevention programmes, which enables people to continue developing preventive activities (without FUNDASALVA, empowering communities).
- The methodology used in training is participatory, always starting from the experience of people, to build ways to approach that work according to the different realities of our population.

RELEVANT OUTCOMES IN PREVENTION

- The methodology of pairs (peer-to-peer) has produced positive results in transmission of the preventive message, both in schools as in communities.
- There have been spaces in key private companies (for example, transport) to develop prevention programs to their employees.
- We have sensitized the population about the need to prevent drug abuse through advertising campaigns and demonstrations, throughout the country.

Treatment and Rehabilitation Program

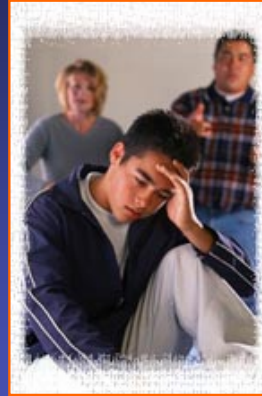
Its purpose is to assist individuals affected by alcohol and drug use disorders and their families, by providing them with the necessary means for their recovery and insertion into a social and productive life.



Treatment and Rehabilitation Program

Programs:

- Ambulatory
 - Early Intervention.
 - Regular Ambulatory Program.
 - Intensive Ambulatory Program.
- Inpatient treatment
 - Therapeutic Community



The programs incorporate Sensitization, Treatment and Rehabilitation, Social and Work Reinsertion components.²³

BENEFICIARIES

- PREVENTION PROGRAMS:
1.2MILLION
- TREATMENT AND REHAB:
32 THOU